

Travel in multiple directions with electronically-controlled all-wheel steering

Generously-sized operator seat

Jungheinrich® curveCONTROL for advanced stability during cornering

Hydraulic fork positioner for different load widths (optional)



ETV Q20 / ETV Q25

Electric multi-directional forklift (4,400-5,500 lbs.)

Jungheinrich multi-directional reach trucks are used wherever long items are carried down narrow aisles and need to be lifted to taller storage elevations. These units, with electric all-wheel steering, allow for loads of up to 26 feet in length to be transported, maximizing space in the warehouse.

There are five steering modes available: from normal travel, to modified normal travel, to diagonal travel, to circular travel (turning on the spot), to parallel travel. In the "modified normal travel" mode, the already small turning radius is reduced further by simultaneous load wheel steering. The advantages of 360° steering are also available: providing minimal turning radius and fastest possible change of direction of travel. This makes the ETV Q series clearly superior to any multi-directional side loader truck.

Effortless, intuitive handling with ergonomically arranged display and controls matched with outstanding visibility makes operating the truck straightforward. In addition, assistance systems increase productivity:

- Jungheinrich curveCONTROL reduces the maximum travel speed when cornering, depending on the steer angle.
- Weighing systems provide weight monitoring at the push of a button.
- Mast reach cushioning reduces mast sway during stacking and retrieval operations, thereby increasing throughput.

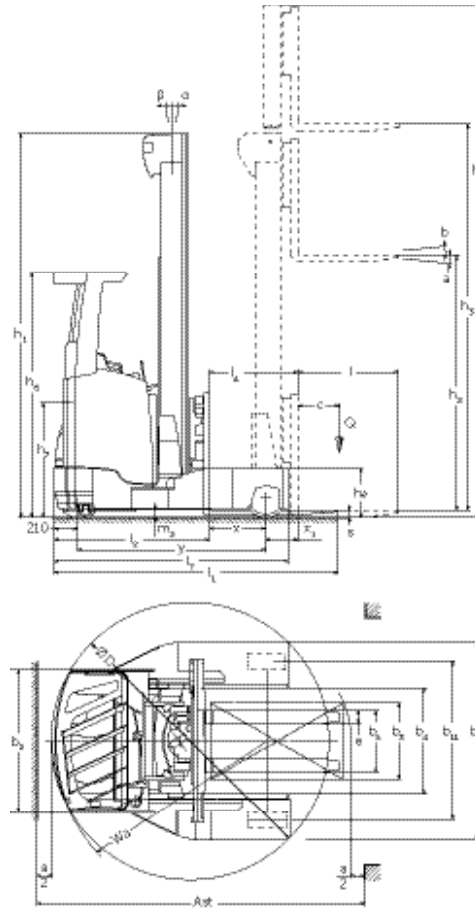
In addition to excellent performance, the truck offers outstanding efficiency:

- Higher performance in travel and lift for more pallet turnover.
- Long operating times due to energy recovery on braking the truck.
- Less aisle width required as a result of the proven reach principle.

A range of options and battery compartment sizes provide customers with the flexibility to choose the right truck to fit their application.

 **JUNGHEINRICH®**

ETV Q20 / ETV Q25



Mast Table ETV Q20 / ETV Q25

	Overall Lowered Height (OAL) h_1		Maximum Fork Lift Height (MFH) h_2		Free Lift h_3 ¹⁾		Overall Extended Height h_4 ¹⁾		Mast Tilt forward / backward	Fork / Carriage Tilt forward / backward
	in	mm	in	mm	in	mm	in	mm	degree	degree
Triplex mast	81	2,050	167	4,250	41	1,066	207	5,250	1 / 5	—
	87	2,200	185	4,700	47	1,216	225	5,700	1 / 5	—
	91	2,300	196	5,000	51	1,316	237	6,000	1 / 5	—
	95	2,400	208	5,300	55	1,416	249	6,300	1 / 5	—
	97	2,440	213	5,420	57	1,456	253	6,420	1 / 3	—
	99	2,500	220	5,600	59	1,516	260	6,600	1 / 3	—
	103	2,600	232	5,900	63	1,616	272	6,900	1 / 3	—
	105	2,650	238	6,050	65	1,666	278	7,050	1 / 3	—
	107	2,700	244	6,200	67	1,716	284	7,200	1 / 3	2 / 5
	111	2,800	255	6,500	71	1,816	296	7,500	1 / 3	2 / 5
	115	2,900	267	6,800	75	1,916	308	7,800	1 / 3	2 / 5
	117	2,950	273	6,950	77	1,966	313	7,950	1 / 3	2 / 5
	123	3,100	291	7,400	83	2,116	331	8,400	1 / 3	2 / 5
	126	3,200	303	7,700	87	2,216	343	8,700	—	2 / 5
	130	3,300	314	8,000	91	2,316	355	9,000	1 / 3	2 / 5
	136	3,440	331	8,420	96	2,456	371	9,420	1 / 3	2 / 5
	140	3,540	343	8,720	100	2,556	383	9,720	1 / 3	2 / 5
	145	3,670	358	9,110	105	2,686	399	10,110	1 / 3	2 / 5
152	3,840	378	9,620	112	2,856	419	10,620	—	2 / 5	
156	3,950	391	9,950	116	2,966	432	10,950	—	2 / 5	
162	4,100	402	10,220	122	3,116	442	11,220	—	2 / 5	
166	4,200	414	10,520	126	3,216	454	11,520	—	2 / 5	
168	4,260	421	10,700	128	3,276	461	11,700	—	2 / 5	

1) includes standard load backrest with height 39.5 inches.

Technical data

as of: 03/2017

				Jungheinrich		Jungheinrich				
				ETV Q20		ETV Q25				
Characteristics	1.1	Manufacturer (abbreviation)		Jungheinrich		Jungheinrich				
	1.2	Manufacturer's type designation		ETV Q20		ETV Q25				
	1.3	Power type		electric		electric				
	1.4	Operator position		transverse seat		transverse seat				
	1.5	Load capacity at rated load center	Q	lbs	kg	4,400	2,000	5,500	2,500	
	1.6	Rated load center	c	in	mm	24.0	600	24.0	600	
	1.8	Load distance, center of drive axle to fork face ¹⁾	x	in	mm	17.7	449	17.7	449	
	1.8a	Additional load distance, mast extended forward ¹⁾		in	mm	9.1	230	9.1	230	
	1.9	Wheelbase	y	in	mm	60.2	1,528	64.5	1,638	
Weights	2.1a	Service weight including battery		lbs	kg	8,157	3,700	8,157	3,700	
	2.3	Axle loading, unloaded front (load) / rear (drive)		lbs	kg	4,991 / 3,166	2,264 / 1,436	4,991 / 3,166	2,264 / 1,436	
	2.4	Axle loading, extended, loaded front (load) / rear (drive)		lbs	kg	1,327 / 12,341	602 / 5,598	1,327 / 12,341	602 / 5,598	
	2.5	Axle loading, retracted, loaded front (load) / rear (drive)		lbs	kg	4,480 / 9,189	2,032 / 4,168	4,480 / 9,189	2,032 / 4,168	
	Wheels Chassis	3.1	Tire type / material		Vulkollan®		Vulkollan®			
3.2		Tire size, front (load)		in	mm	13.5 x 5.5	ø 343 x 140	13.5 x 5.5	ø 343 x 140	
3.3		Tire size, rear (drive)		in	mm	13.5 x 5.5	ø 355 x 135	13.5 x 5.5	ø 355 x 135	
3.5		Wheels, number, rear (drive) / front (load) (x=driven)				1x / 2		1x / 2		
3.7		Track width, load wheels (center of tires)	b _{tt}	in	mm	55.9	1,420	55.9	1,420	
4.1		Mast / fork carriage tilt forward / backward ²⁾		degree		1° / 5°		1° / 5°		
Dimensions		4.2	Lowered height ⁴⁾	h ₁	in	mm	167.7	4,260	167.7	4,260
	4.3	Fork free lift height (see tables) ^{4) 5)}	h ₂	in	mm	128.0	3,276	128.0	3,276	
	4.4	Maximum fork height (see tables) ⁴⁾	h ₃	in	mm	421.3	10,700	421.3	10,700	
	4.5	Extended mast height ⁵⁾	h ₄	in	mm	460.6	11,700	460.6	11,700	
	4.7	Overhead guard height (top)	h ₆	in	mm	86.2	2,190	86.2	2,190	
	4.8	Ground to seat index point	h ₇	in	mm	41.6	1,057	41.6	1,057	
	4.10	Height of wheel arms ³⁾	h ₈	in	mm	17.3	440	17.3	440	
	4.19	Overall length (including forks) ¹⁾	l ₁	in	mm	96.0	2,439	98.9	2,511	
	4.20	Length to fork face (includes fork thickness) ¹⁾	l ₂	in	mm	50.7	1,289	53.6	1,361	
	4.21	Overall width, chassis / base legs	b ₁ /b ₂	in	mm	69.7 / 50.0	1,770 / 1,270	69.7 / 50.0	1,770 / 1,270	
	4.22	Fork dimensions, length x width x thickness				45.3 x 5.5 x 2.0		45.3 x 5.5 x 2.0		
	4.23	Fork carriage type (to ISO 2328, class/type A,B)				2 / B		2 / B		
	4.24	Fork carriage width	b ₃	in	mm	32.7	830	32.7	830	
	4.25	Overall fork width	b ₅	in	mm	14.0 / 29.5	356 / 750	14.0 / 29.5	356 / 750	
	4.26	Baseleg opening (BLO)	b ₄	in	mm	37.0	940	37.0	940	
4.28	Reach distance	l ₄	in	mm	26.7	679	30.0	762		
4.32	Ground clearance, center of wheelbase	m ₂	in	mm	3.7	95	3.7	95		
4.34a	Minimum aisle width, 90° stack - no clearance, 48" x 40" pallet ¹⁾	Ast	in	mm	109.4	2,780	113.0	2,870		
4.35	Minimum outside turning radius	Wa	in	mm	68.5	1,741	74.5	1,893		
4.37	Overall length – to tip of wheel arms	l ₇	in	mm	77.0	1,957	83.1	2,112		
Performance Data	5.1	Travel speed, loaded / unloaded ^{2) 3)}		mph	km/h	8.7 / 8.7	14 / 14	8.7 / 8.7	14 / 14	
	5.2	Lift speed, loaded / unloaded ²⁾		ft/min	m/s	74.8 / 126.0	0.38 / 0.64	74.8 / 126.0	0.38 / 0.64	
	5.3	Lowering speed, loaded / unloaded ²⁾		ft/min	m/s	108.3 / 108.3	0.55 / 0.55	108.3 / 108.3	0.55 / 0.55	
	5.4	Reaching speed, loaded / unloaded ²⁾		ft/min	m/s	39.4 / 39.4	0.2 / 0.2	39.4 / 39.4	0.2 / 0.2	
	5.7	Gradeability, loaded / unloaded		%		7 / 11		7 / 11		
	5.8	Maximum gradeability, loaded / unloaded		%		10 / 15		10 / 15		
	5.9	Acceleration time, loaded / unloaded (10 meters)		sec		5.4 / 4.8		5.6 / 5.1		
	5.10	Service brake type				electric		electric		
	Motors	6.1	Drive motor rating S2 60 minutes		HP	KW	11.40	8.5	11.40	8.5
		6.2	Lift motor rating at S3 15%		HP	KW	20.8	15.5	20.8	15.5
6.4		Battery voltage, nominal capacity K5		V/Ah		48 / 620		48 / 620		
6.5		Battery weight, minimum / maximum ¹⁾		lb	kg	1,967 / 2,326	892 / 1,055	1,967 / 2,326	892 / 1,055	
		Battery compartment dimensions (l / w / h) ¹⁾		in		13.97 / 48.15 / 30.87		355 / 1,223 / 784		
Other	8.1	Drive control				Mosfet / AC		Mosfet / AC		
	8.2	Hydraulic pressure for attachments		psi	bar	2,176	150	2,176	150	
	8.3	Hydraulic flow rate for attachments		gal/min	l/min	5	20	5	20	
	8.4	Sound pressure at operator's ear (according to EN 12 053)		dB(A)		70		71		

1) values with minimum battery box length and 45" long forks. These values change with different battery box sizes.

2) values dependent on mast selection / type

3) with load wheel cover: + 30 mm

4) with maximum height triplex mast.

5) includes standard load backrest with height 39.5 inches.

6) maximum speed attainable, after break-in period, varies with truck, weight, rolling resistance, mast height, options and battery condition.

This specification sheet only provides technical values for the standard truck. Non-standard tires, different masts, additional equipment, etc., could produce other values. Rights reserved for technical changes and improvements.

The Jungheinrich Advantage



Five different steering modes



Easy-to-read color display



multiPILOT control (optional)

Operator awareness

- Electric braking distributed to all three wheels ensure that the ETV Q comes to a smooth stop, even in transverse travel.
- The overhead guard design for both standard and panoramic option provides a clear view of lifted loads.

High-performance mast

Jungheinrich masts provide outstanding stability and space utilization to high lift heights.

- Lifting heights up to 421".
- Low door clearance at great lift heights.
- Extremely durable due to cold-drawn mast sections.
- High residual capacities at high lift heights.
- Patented mast reach cushioning system (optional) for reduced mast oscillation during stacking and retrieval.

Fork positioner with extended fork widths (optional)

Optimum adaptation to different load widths for the effective transportation of long loads.

- Easy position adjustment with a push of a button.
- Straddle width up to 81 inches.
- Integrated design with narrower front dimensions for narrow aisle widths.
- Three variants available with different frame widths.

Ergonomics

The operator position / stance provides a stress-free and ideal working space for high performance.

- Five buttons for the different steering modes.
- Comfortable seat that is adjustable to every driver (seat position, backrest, body weight).
- Many storage options
- Generous available space
- Three-phase control of all 3 steer wheels, switchable from 180° to 360° steering mode.
- Standard automotive layout of pedals.
- Standard key switch.

Assistance systems and options

For increased performance and less fatigue:

- positionCONTROL with the SNAP function enables easy and fast stacking without further buttons having to be pushed.
- Carriage and fork camera (options) with ergonomically adjustable monitor facilitates efficient stacking and retrieval.

Easy-to-read color display

- Indication of direction of travel and wheel position.
- Indication of battery status and remaining capacity.
- Three selectable travel programs for individual adjustment to each need.
- Operating hours and time of day.
- Lifting height (optional).
- Load weight (optional).

soloPILOT control lever

The control lever is used for activating all hydraulic functions, selecting direction of travel and operating the horn:

- All the controls are within the operator's field of vision and are clearly designated for each specific function.
- Maximum throughput from simultaneous operation of two separate hydraulic functions (e.g. lifting and reaching).
- Convenient control of other attachments, e.g. fork positioner (optional).
- Precise operation from sensitive control of all functions
- Overall comfortable operator compartment, especially with padded armrest.
- multiPILOT (optional).

- Built in compliance with ANSI/ITSDF B56.1 design specifications in place at time of manufacture.

Parts when you need them

Jungheinrich's Parts Fast or Parts Free Guarantee ensures next-business-day delivery by 5:00 p.m. of all Jungheinrich parts in the United States, or they're free, including freight. For customers in Canada and Mexico, the guarantee ensures shipping of parts within 24 hours from the time the order was placed by the dealer. See your local Jungheinrich dealer for program details.

* Programs may be subject to change without notice and may vary by region. Please ask your local Jungheinrich dealer for complete terms and conditions.